

# ARGOS

Worldwide tracking and environmental monitoring by **satellite**



**ARGOS**  
COLLECTE LOCALISATION SATELLITES

# Argos is the only **worldwide** satellite system dedicated to studying and **protecting the Earth**

## A unique worldwide system

Started under a French/American cooperation in 1978 between CNES (French Space Agency), NASA (National Aeronautics and Space Administration) and NOAA (National Oceanic and Atmospheric Administration) as a tool for worldwide oceanographic networks, the Argos system now benefits from support from several international space agencies including: CNES, NOAA, Eumetsat (European Organization for the Exploitation of Meteorological Satellites) and Jaxa (Japanese Space Agency).

Argos is operated by CLS (Collecte Localisation Satellites) a subsidiary of CNES and IFREMER (French Research Institute for Exploitation of the Sea) with two main processing centers located in France and in the US. CLS headquarters are located in Southwestern France just outside of Toulouse, the aeronautics and space capital of Europe and with offices in the USA, Japan, Australia, Chile, Peru, Korea, Russia, Indonesia.



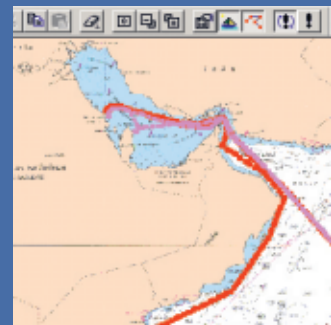
## How Argos works

- › Transmitters send signals to satellites on dedicated frequencies
- › Polar orbiting satellites collect the signals as they fly over a transmitter
- › Ground antennas relay recorded and real-time signals from the satellites to processing centers
- › The two processing centers in France and the USA process the signals and send them out as data to users on maps, tables or files
- › Argos users all over the world access their data on-line, by email, sms, fax, cd-rom or directly through mapping software
- › Bidirectionnal Argos 3 provides the opportunity for users to communicate with their platforms and to significantly increase their data transmission.

The Argos system provides worldwide tracking and environmental monitoring of any mobile or fixed station fitted with an Argos transmitter. Information relayed via Argos is used for numerous applications ranging from ocean observations and wildlife protection to fisheries management.

## Tracking

Argos provides scientists and government agencies with trackings of any moving object fitted with an Argos transmitter. Several locations collected over a fixed period of time can be used to monitor the route of a fishing vessel, large migrations of birds and other animals, oceanographic buoys and their routes through the ocean based on the movement of currents...

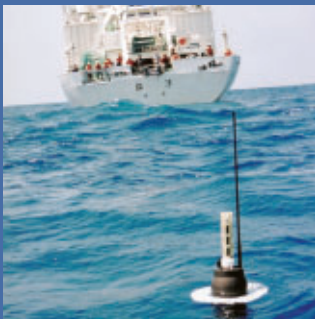


## Environmental monitoring

Data are collected worldwide via Argos from an object, either fixed or mobile, that is fitted with a sensor inside the Argos transmitter. Sensors can provide different types of information such as: air temperature, salinity of water, animal's heart rate, water level of a river, health reports sent from a remote area...

### **Ocean and Climate**

*Buoys of all kinds (drifting, moored, floats...) scrawl the oceans collecting data sent via Argos on: currents, temperature, salinity. These data from remote areas, otherwise unattainable, are an important step in understanding the environment and climate change.*



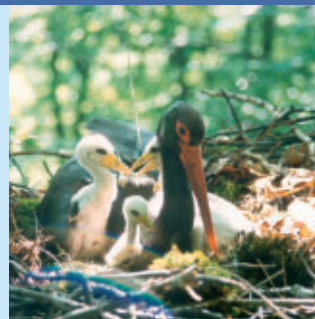
### **Fisheries Management**

*Fish stocks are decreasing at alarming rates and in order to prevent illegal fishing and to better monitor vast ocean zones otherwise unmonitored, Argos satellite tracking is an important and vital tool. Fishing vessels worldwide are equipped with Argos.*



### **Wildlife Protection**

*Thousands animals are tracked annually via Argos to provide scientists with information on migration and behavior while helping implement wildlife protection measures.*





## Argos contacts worldwide

### Headquarters: CLS

8-10, rue Hermès  
Parc Technologique du Canal  
31520 Ramonville Saint-Agne, France  
Tel. + 33 (0) 5 61 39 47 20  
Fax + 33 (0) 5 61 39 47 97  
e-mail: info-argos@cls.fr  
www.cls.fr

### Australia and South Pacific: SIT, Satellite Information Technology PTY-Ltd

Suite 706, 1 Queens Road  
Melbourne, VIC 3004, Australia  
Tel. + 61 (0) 3 9863 9650  
Fax + 61 (0) 3 9863 9675  
e-mail: guan@clsargos.com.au

### North America: CLS America, Inc.

1441 Mc Cormick Drive, Suite 1050  
Largo, MD 20774, USA  
Tel. + 1 301 925 4411  
Fax + 1 301 925 8995  
e-mail: userservices@clsamerica.com  
www.clsamerica.com

### Japan: Cubic-I-Ltd

Bluebell Building 7F  
2-15-9 Nishi Gotanda  
Shinagawa-ku  
Tokyo 141-0031,  
Japan  
Tel. + 81 (0)3 3779 5506  
Fax + 81 (0)3 3779 5783  
e-mail: argos@cubic-i.co.jp

### Peru: CLS Perú

Jr. Trinidad Moran 639  
Lince, Lima,  
Peru  
Tel. + 51 1 440 2717  
Fax + 51 1 421 2433  
e-mail: gsirech@clsperu.com.pe

### Chile: Cunlogan S.A.

Almirante Señoret 70 of 74  
Valparaíso, Chile  
Tel. + 56 32 25 28 43  
Fax + 56 32 25 72 94  
e-mail: cbull@cunlogan.cl

### Southeast Asia:

#### PT CLS Argos Indonesia

Adhi Graha, It 17, Suite 1701  
JI Jend Gatot Subroto, Kav 56  
Kuningan Timur, Setiabudi  
Jakarta Selatan, 12950, Indonesia  
Tel: + 62 215 264 266  
Fax: + 62 215 264 265  
e-mail: sales@clsargos.co.id

#### Korea: KL Trading

Room No. 328, Obelisk Bldg. 492-4  
Dapshimni-5 Dong, Dongdaemun-Gu  
Seoul, Korea  
Tel. + 82 2 2215 7134/5  
Fax + 82 2 2215 7136  
e-mail: klsckim@kornet.net

#### Russia: ES-PAS

15-73 Léningradskoe Chaussée  
125171 Moscow, Russia  
Tel: + 7 495 150 0332  
Fax: + 7 495 150 0332  
e-mail: a.salman@es-pas.com

[www.argos-system.org](http://www.argos-system.org)



**ARGOS**  
COLLECTE LOCALISATION SATELLITES